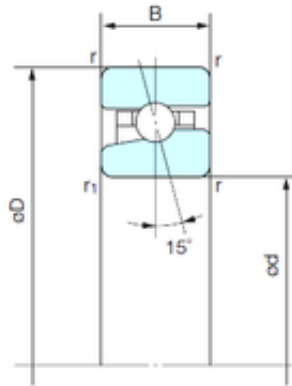




# BEARING USA CORP.

## 40 mm x 68 mm x 15 mm NACHI BNH 008 Angular contact ball bearings



Bearing No. BNH 008

Size	40x68x15 mm
Bore Diameter	40 mm
Outer Diameter	68 mm
Width	15 mm
d	40 mm
D	68 mm
B	15 mm
C	15 mm
Angle ( ° )	15 °
r min.	1 mm
r1 min.	0.6 mm
Basic dynamic load rating (C)	14,8 kN
Basic static load rating (C0)	12,9 kN
(Grease) Lubrication Speed	22000 r/min

BNH 008 Bearing 2D drawings and 3D CAD models